

- \* Special isolation system to stand the printer
- \* For direct to garment including white ink.
- \* Works for polyester and cotton fabrics

- Ideal for direct to garment dry with good productivity and flexibility.
- Fast startup ! (15 to 20min)
- Perfect heat distribution (2 zones)
- PT100 platinum heat sensor
- 2-year guarantee on the machine.
- 10-year guarantee on heating elements

- Manufactured in France.



Set programs



Convection Air flow



Fast heat up



2 Drawers

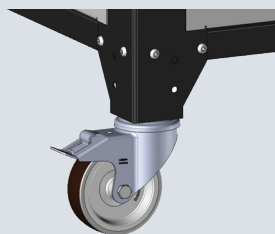


Touch Screen

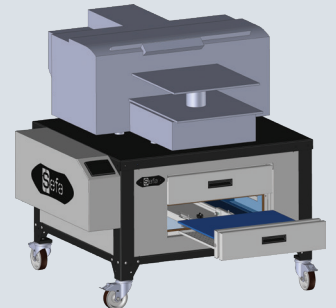
## FEATURES



Laptop / Screen holder for space saving !



Easy to move !



Use it as a stand for your printer!

Email

sales@sefa.fr  
support@sefa.fr  
www.sefa.fr



Phone

Office : + 33 4 68 74 05 89  
Fax : + 33 4 68 74 24 08



Address

SEFA SAS  
Z.I. PASTABRAC  
11 260 ESPERAZA (FR)



## TECHNICAL CHARACTERISTICS

Type Operation	Manual SLIDE - Tray with drawer
Platen size	540x410 mm / 21x16 "
Weight	387 KG
Max thickness	45 mm
°C / °F Max	200 °C / 392 °F
Max Air flow	1000m3/h.
Power	3600 W
Power supply	240V Single phase
Amperage	16 A
Applications	Direct to Garment
Dimensions	800x1350x1750 mm 32x53x69 "

## ACCESSORIES



### iSPRAY 2

This machine was created to prepare garment for direct-to-garment printing technology with white ink. The pretreatment sprayed by the iSPRAY 2 on the dark garment will allow you to print directly your design.



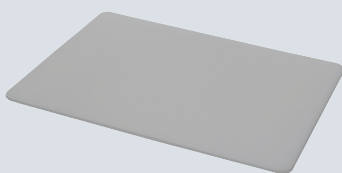
### NET-CO2

Ultrasonic cleaner for iSPRAY

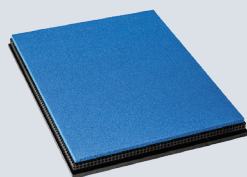


### BU-iSPRAY2

Spray nozzle quick release (1/4) for iSPRAY 2



iSPRAY-KITJUNIOR  
20x30 cm plate for iSPRAY 2.



PLA-DRY M  
Sponge plate to dry pretreated clothes.

## SETTINGS

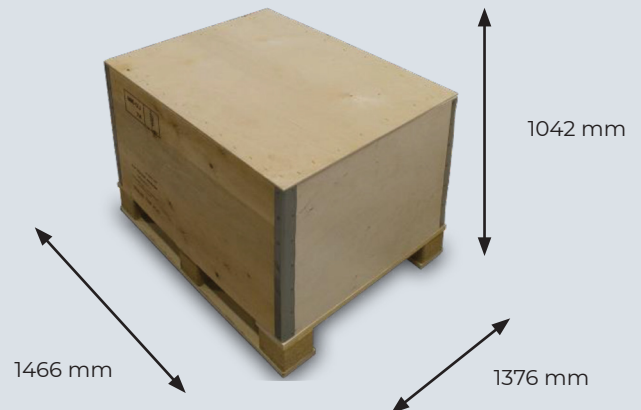
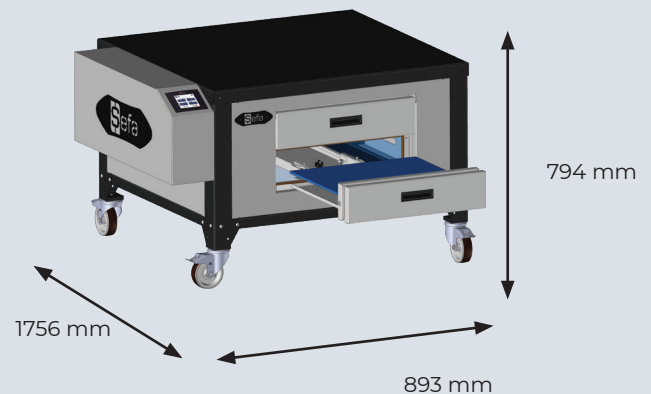


Touch electronics developed by Sefa  
Precise and fast regulation (PID control)  
Recordable programs  
Counter with reset  
Double timer  
Energy saving

From 0 to 570 sec (precision +/- 1%).  
From 0 to 220°C (precision +/- 1%).

Heating time to reach 180°C : 10 min.

## DIMENSIONS



Box weight CAI-TDRY : 75 kg